

Ramim Engineering Works LTD

Military Portable Shelters

With over 40 years of experience as a leader in tactical shelter design and manufacture, Ramim is recognized world wide for it's efficient production of lightweight units. Today these rugged transportable shelters are used by every army around a world. Ramim Engineering Works Ltd. is a subsidiary of Koor Metals Group. Ramim is a division of Koor Metals and receives direct technical, financial and logistical support from this organization. The company utilizes U.S. and Israeli know-how to manufacture a specialized line of transportable prefabricated Communications Shelters, Mobile Tactical Shelters, Telecommunications Shelters, Mobile Laboratories, Collapsible Cabins, Refrigerated Container Trucks. The company manufactures Communication Shelters in accordance with various American Military Specifications.

S-788 SHELTER

Electronic Equipment

LIGHTWEIGHT, MULTIPURPOSE
SHELTER (LMS) FOR THE HMMWV



Subject to technical modifications. E&OE.



Brochure No-2014-05



Modification & Integration:

Ramim Engineering Works Ltd. can meet any Modification or Integration requirement from simple Entry Panel through Power Distribution, Lighting, Air Conditioning, Equipment Racks, Power and Signal Cabeling Racks and Onboard Power Generators. Ramims Communications Shelters and products incorporate any EMI, RFI protection and EMC compatibility requirements.

The following are Ramim's Shelters as per NATO standards: NATO-I, NATO-II, NATO-III, ACE-I, ACE-II, ACE-III

The following are Ramim's Shelters as per US Specifications: S-250/G, S-280C/G, S-1497, S-788, 20' ISO Shelters, 20' One-Sided or Two-Sided Expandable Shelters Various types of Shelters can be manufactured to order up to 50' long.

Areas of Deployment:

- Transmitting and Receiving Stations
- Air Defence Command Control Centers
- Mobile Military Command Centers
- Mobile Laboratories
- Mobile Workshops
- Radio and TV Link Stations
- Mobile Medical Units
- Air Traffic Control, ATC Centers
- Disaster Relief Coordination Centers
- Various mobile Housings and Enclosures for UAV & Missiles

Ramim's key Advantages:

- In house Design and Production
- Modularity
- Survivability
- Low life cycle cost
- Maximum space and maximum payload without sacrificing mobility
- Increased RFI integrity throughout the lifecycle of the Shelter
- Full Qualification to US Military Standards & NATO Standards

S-788

S-788 SHELTER

Electronic Equipment

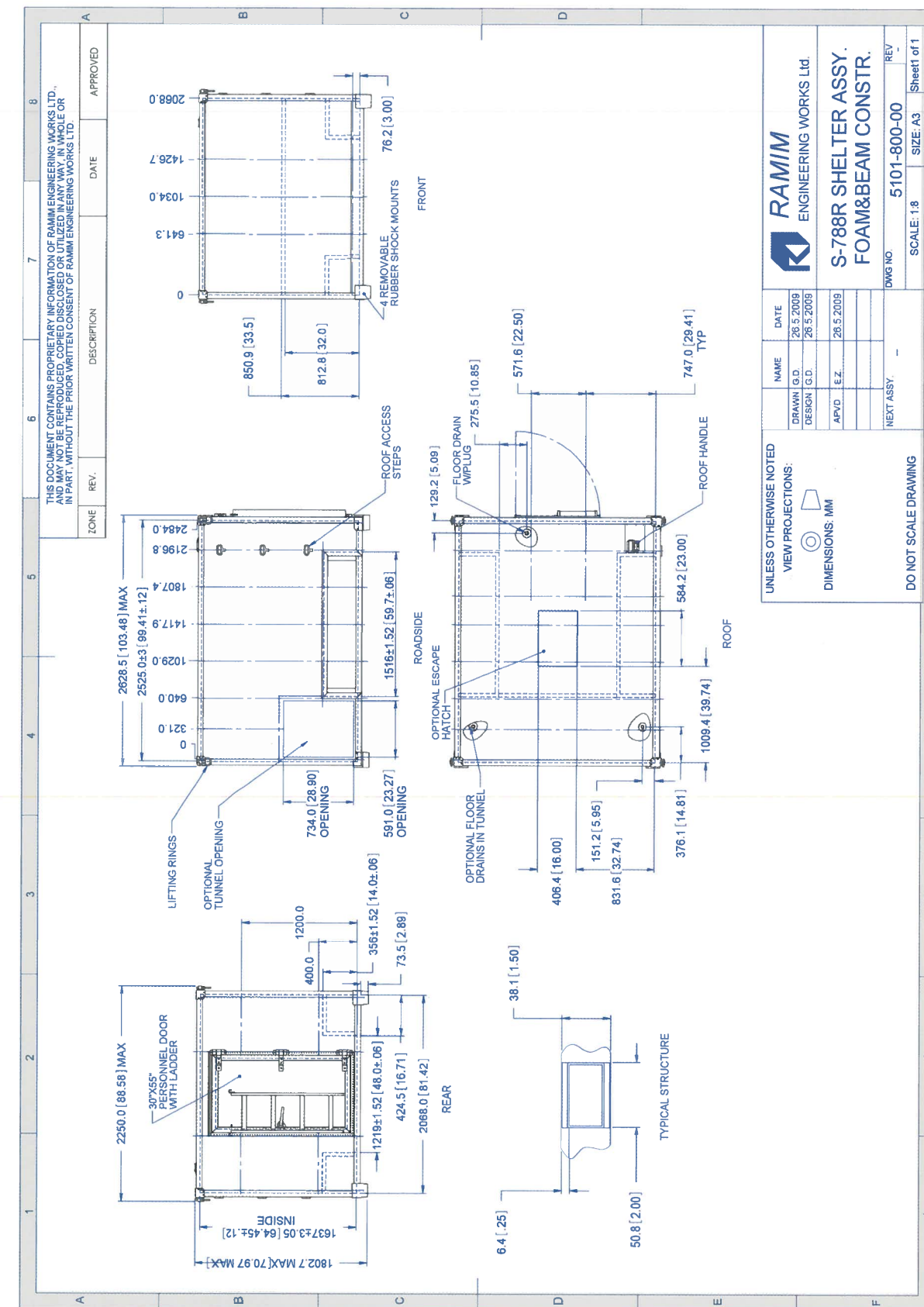
The lightweight, multipurpose shelter (LMS) is a high strength enclosure, designed specifically for use on the HMMWV. This shelter used as primary electronic platform for wheeled tactical vehicles. The S-788 LMS contains the latest advances in shelter design technology. The rugged design of the S-788 endures demanding off-road military operations, while protecting on-board electronics from potential hazards. C-130 drive-on/back-off capability meets your system transportability requirements. This impressive strength-to-weight ratio is the result of innovative material engineering. Panel hot bonded sandwich consisting of polyurethane foam core, aluminum skins and a framework of high strength all riveted aluminum alloy extrusions (6061-T6). With nearly 295 cubic feet of useable interior space, 50% more than the S-250, the S-788 shelter is ideal for most C3I tactical missions.

Roof load	<ul style="list-style-type: none"> Snow and ice 40 lbs over 1 sq. ft area. Personnel and equipment 660 lbs over 2 sq. ft area
Floor load	1000 lbs. over 2 sq. ft area without permanent deformation
Mounting member support loads	Wall, roof and floor tensile load 1000 lbs followed by 100 inch-pounds torque load 5/16"-18UNC inserts
Temperature range	<ul style="list-style-type: none"> Operating: -65°F to 125 °F plus solar load Non-operating mode: -80 °F to 160 °F
Heat transfer coefficient	Type I U-factor = $0.45 \frac{Btu}{hr \cdot ft^2 \cdot ^\circ F}$ Type III U-factor = $0.50 \frac{Btu}{hr \cdot ft^2 \cdot ^\circ F}$ Type II U-factor = $0.50 \frac{Btu}{hr \cdot ft^2 \cdot ^\circ F}$
Watertightness	Completely water-tight; Tested to 30 inch fording depth (Type I only) and simulated rainfall
Lifting eyes	Four (4) eyes with 3" inside clearance. 5000 lbs tensile load per corner in any direction. A swivel type ring aligns with applied force during lifting and tie-down
Standard features	<ul style="list-style-type: none"> Roof Access steps: Three(3) recessed folding steps in sidewall and one roof handhold Access ladder: Standard ladder with external mounting bracket
Transportation	Designed specifically for use on the HMMWV
Optional features	Shock absorbers attachment kit (HMMWV) mounting kit (#17-1-8584), Ramim drawings 5101-108, 5101-109

The S-788 is available in three configurations to meet your specific mission:

- Type I – basic S-788
- Type II – S-788 with generator tunnel, escape hatch and CB purge valve
- Type III – S-788 with generator tunnel only

Model No	Specifications	Description	Exterior dimensions [in]			Interior dimensions [in]			Shelter weights [lbs]	Payload [lbs]	Outline drawing No
			H	W	L	H	W	L			
Type I	MIL-S-44408 MIL-STD-907 (ASTME-1925)	Basic	67	84	102	64½	81½	99½	608	3300	5101-800-00
Type II	MIL-S-44408 MIL-STD-907 (ASTME-1925)	W/tunnel, hatch & CB purge valve	67	84	102	64½	81½	99½	650	3300	5101-800-01
Type III	MIL-S-44408 MIL-STD-907 (ASTME-1925)	W/tunnel	67	84	102	64½	81½	99½	643	3300	5101-800-02



THIS DOCUMENT CONTAINS PROPRIETARY INFORMATION OF RAMIM ENGINEERING WORKS LTD. IT MAY BE REPRODUCED, COPIED, DISCLOSED OR UTILIZED IN ANY WAY IN WHOLE OR IN PART, WITHOUT THE PRIOR WRITTEN CONSENT OF RAMIM ENGINEERING WORKS LTD.

NAME	DATE
DRAWN G.D.	26.5.2009
DESIGN G.D.	26.5.2009
APVD. E.Z.	26.5.2009
NEXT ASSY.	

UNLESS OTHERWISE NOTED
VIEW PROJECTIONS:
DIMENSIONS: MM

DO NOT SCALE DRAWING

RAMIM ENGINEERING WORKS LTD.
S-788R SHELTER ASSY.
FOAM&BEAM CONSTR.

DWG NO. 5101-800-00
SCALE: 1:8
SIZE: A3
Sheet 1 of 1